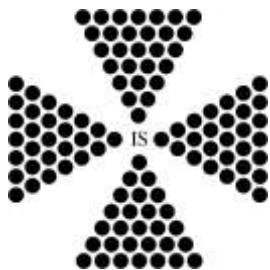


CHRIST COLLEGE OF TRANS-HIMALAYAN WISDOM ESOTERIC STUDENTS' NEWSLETTER

June 2010 – September 2010

Issue No. 56



Christ College of Trans-Himalayan Wisdom

Office 30 Rutland St, St Albans, Christchurch

PH: 03 355 1395

FAX: 03 355 1396

433 Long Bay Rd

PH: 03-304-8893

Email: sevenrays@clear.net.nz

www.christcollege.co.nz

CONTENTS:

	Page
Spot On	2
The Great Mother	3
Evolving in Being	4
Learning from Nature	7
Meditation Retreat	9
Fiery Opportunities	10
Solar Fire Meditations	12
Poetry	12
Exploring Christ College	14
A New Cycle Begins	15
Current Events	16
Land for Sale	17
Study Options	18
Updates and Information	18

SPOT ON

Here we are: upside-down in New Zealand. Or, at least that is how most of the world sees us. They live in the Northern Hemisphere and since they are right-side-up, we are in the great down-under. Odd though, I do not see me or us as upside-down.

As we approach the winter solstice and the days become shorter and shorter, I find myself spending more time in front of the fire reading and musing. I feel like having a Christmas tree and feasting. I am grateful for the Maori celebration of Matariki (the appearance of the Pleiades) at this time because it seems a good counterpart to Christmas.



At the same time, I am aware that my Northern Hemisphere friends are off to the cabin by the lake or the summer house. The days are long, but they also sense that it is all down-hill from here. Who is up-side-down?

“Up there”, they say that the light returns when the Sun moves into Capricorn. “Down here”, we say that the light returns when the Sun moves into Cancer. The Northerner esoterically means by this that the Christ or Light of the World returns in the sign of Capricorn. The initiate achieves, in this sign, enlightenment.



So, what is the truth we speak when we say that the light returns in Cancer? It means that the light of the soul again takes on a human form. Humanity takes on the task of gradual enlightenment in order to serve the whole. We will all someday fulfil our destiny.

It is said that the Northern Hemisphere is masculine and the Southern Hemisphere is feminine. Could it be that we are both right-side-up?



THE GREAT MOTHER

by Lawson Bracewell

A great being, which can be called The Great Mother, has created and is creating us and every living thing. At this time of the year, as we enter Cancer which is the sign of the Mother, we do well to know and honour her. This article will explore the light which the Ageless Wisdom Teachings throws upon her and her functioning.

The Teachings of the Tibetan Master D.K. state that there are two great streams of energy within creation: the masculine and the feminine. All humans are on the masculine side whether in male or female bodies. As such, we struggle to learn to love and to yield to a greater will. We evolve through pain and suffering.

The feminine side of creation is the domain of the Great Mother. This side carries out a greater Will with no talking back. Love radiates in all directions. The Mother operates with all encompassing intelligence and resourcefulness.

The Great Mother is often referred to as a deva or great angelic being. Under her/within her are devic beings of every rank high and low. What characterizes them all is that they draw the grade of substance that they resonate with to them, combine it with their own bodies and build forms. All things we can perceive are created by them. But, more astounding, all the subtle forms which we can not use our senses to perceive are also created by them. Our souls, emotions, thoughts and all of our Gods are created by them.

Most folklore has stories about the smallest and most unevolved of the Great Mother's helpers. These are the elementals that create rocks, soil, water, plants, weather patterns, earth changes, etc. 20th century clairvoyant, Geoffrey Hodson, also described devas of compassion and healing that hover over hospitals or devas that hover over mountains or places of beauty.

But, what we need to know is that the Great Mother, through her many expressions, also builds the subtle and potent forms that we identify with as well. She builds the Causal body which most people refer to as the soul. She builds the Spiritual Triad or true soul. She builds our true self which is the Monad.

None of these bodies are us. We are pure indescribable or unlimited energy. What she gives us is bodies of expression. She begins by giving us a body that has all the necessary equipment to successfully engage with, struggle with and eventually transcend the physical material world. As we succeed, we also positively change that world. She also gives us emotional and mental bodies. And, as we master these bodies, we bring some measure of her love and intelligence into the world.

As we are ready, she gives us subtler and subtler and more powerful bodies. As we master them, we come under and express the Will of the Masculine side of creation and express all the qualities of the Great Mother.

Those who are interested in astrology may know that the Great Mother works through the planet Neptune with its great powers of transmutation. She works with the purification of the waters on every level. Venus can be seen as her highly evolved daughter who directs love to heal all aspects of the forms which make up the personality. She guides us out of the valleys of desire onto the upward slopes of aspiration.

The Great Mother, through her many daughters, gives us everything that we need to attain mastery and to free ourselves from the lesser expressions of her. Like our own mothers, she fosters independence. She offers unconditional love as that sweet treat which encourages us to let go of that which fear binds us to. She creates a bridge to the Father. Without her, we would never gain enough distance to know him nor would he ever see the many aspects of his materialized self.

For the duration of the manifested Universe, we should all say: All Hail to the Mother! Or we might turn to each other and all creation and say: I see the loving intelligent Great Mother working through you.



EVOLVING IN BEING

by Orest Tarnawsky

The apparent purpose for which the universe comes into existence is to change potentialities into actively manifesting powers. We, as small units of existence, are a part of this process.

Potential expression may be contrasted with the actuality of expression. This may be re-phrased as the question “How does our mission interpreted as a ‘soul-devised blueprint’ compare with the pattern of our living?”

While listening to an old favourite singer, I noticed that her voice manipulations were evident, the quality of tone and timbre were utilised, the words were evocative, yet despite training and good execution, there was no felt intention behind her voice. The presentation was a charade, a clever performance, but empty, having appearance without the depth of quality. Something of essence had been lost.

Sometimes our knowledge and its expression as vocal communication have that same “emptiness”. Empty lives often follow routine patterns, where appearances are maintained but the emerging new is denied. To bring aliveness, intensity and vitality to our expression of knowledge either in song or writing one major requirement is a renewal of experience.

This experience involves becoming that knowledge, i.e. conscious living of that knowledge through its expression through relationships, thus becoming exemplars of the wisdom. This is renewed daily, for wisdom is demonstrated as appropriateness to ever changing contexts of life.

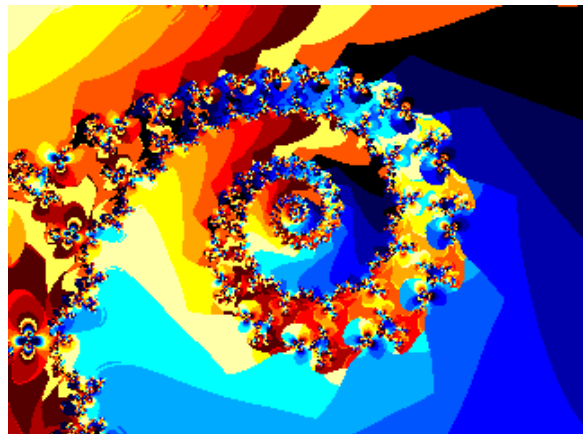
This is more than a re-iteration of understanding and meaning through the use of personal metaphors. It is the process of seeing the significance in the moment through the conscious employment of the mind, nay energy, inherent in the perceived complex matrix. Yes energy interactivity is involved. How to vivify, and vitalise, our life in this service? Being fully present to the totality of the situation is here being suggested.

Utilising held values and hypotheses as the framework or structure that motivates and inspires our actions or behaviours is also an aspect of this unfolding. Am I being my grasp of truth? Is there integrity between my held belief system and my manifesting emotions, thoughts and actions?

Our living in this presenting existence is a vortex of opportunity to unfold our being. Conscious attention as well as active participation (intentional action) may help us realise this unfolding.

As students of the Wisdom we may hold to the concept expressed in the poem of *The Secret Doctrine*:

“The fundamental identity of all Souls with the Universal Over-Soul...and the obligatory pilgrimage for every soul - a spark of the former-through the Cycle of Incarnation in accordance with Cyclic and Karmic law, during the whole term.”



This acceptance of being a soul in incarnation brings a certain consequence: we are part of a continuity of expression, and our consciousness becomes aware of this reality. We may know this as a concept. We may state and affirm that ‘I am a soul’. We may state that “continuity of consciousness” even after physical death is a truth. But, how does this as a truth impinge on our daily living in this world? Is our life one of appearances or are we living out the qualities of the soul?

These questions call for reflection, self-examination and evaluation. Meditation, quiet

retreats, contemplation provide a means for accessing our inner awareness and truthfully responding to these questions. This is an early stage of our endeavour to express our-Selves. This leads to insights and the transformative process of changing patterns of thought that are invalid, changing emotive feelings that are insincere, and changing behaviours that are damaging. Thus a modification of the manifesting pattern towards our potential expression is commenced.

Each soul incarnated with a group of souls for a group purpose or intention. If this is a held tenet, valued by you as an individual, how is it manifesting in your living? How are you promoting relationships that develop this concept thus creating opportunities for its realisation?

Answering these questions may take one into the second stage of becoming. "Evolving in Being" is that process where our accepted "framework for reality" is increasingly incorporated into the actuality of our livingness. The earlier stage of soul work has been to some degree accomplished as values have become assimilated and expressed in rhythmic spiritual living.

Key terms that are a part of this new becoming include: Sound, Tessellation, Paradox, Simultaneity, Creativity, Complementarity, Synchronicity, Telepathy, Authenticity, Intuition, Invocation-Evocation, and Spontaneity.

Themes of wholeness (unity), inter-activity and spiral cyclic repetition may be constantly re-iterated as these concepts are expounded. These terms will become more evident as we evolve in being. They are then realised as part of our experience.

Recently I wrote on tessellations; now I'm touching on sound (following). Slowly in this series of articles I will attempt to extend all key terms, hopefully conveying a hint of that state of "Evolving in Being".

Sound

Sounding our true essence involves the note of our very being, our true intent, as our highest functioning is now called forth. This

note is complex and binds us to life. Here is meant that even a partial sounding of this note adheres us in/to manifestation; when the note is lost death ensues. Somehow the second law of the soul (The Law of Magnetic Impulse) may be enacted within this context of sound. This passage is indicating that we as humans are expressing and experiencing life in a manner that is using our potential attributes and qualities.

Sound and the incorporation of the sounding of others through reading, study and careful listening is a natural development of this unfoldment. This statement alludes to becoming involved in a greater whole, through education and active participation with others, possibly through joint ventures. Extending this further...my term is "Still- Listening".

There is in "Still- Listening" a hearing of the note behind the words and voice, a touching of the "vibrating cry" that is generally only hinted at in the context of the speech of others. This empathic relationship has that quality of 'being seen' and actually 'seeing the other'. Sometimes in that still silence all that is needed has been said and further words become a nuisance. This quality (Still-Listening) is also evident as we listen when reading. This concept is difficult to explain; what is meant is that an active intent of hearing is made while reading. Sometimes this listening while reading results in greater insights being apprehended. Thus a deeper understanding or comprehension is attained.

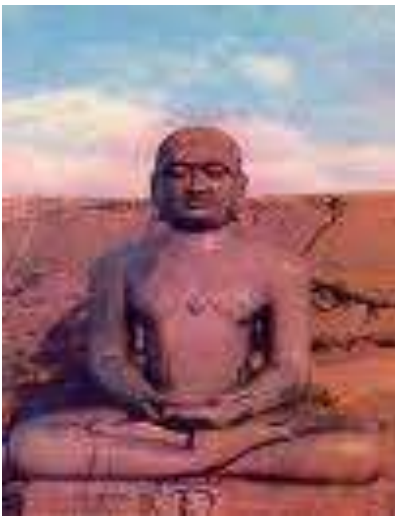
Astrology may be a direct way to invoke this type of communion; this is a kind of intuitive grasp of the presented pattern rather than an analytical process. While other circles of words (prepared or spontaneous questions) are like "fishing" with a variety of lures to test the subtle responses, this level of interaction with others requires an open honesty and a degree of refinement. This refinement involves the ability to be present in the moment in that manner of fullness where the past and future are non-intruders.

This refinement also involves a state in which emotional or mental reactivity is revoked - somehow just standing there while the stream of livingness washes over you. Then a state of knowingness abides, and a well-framed query

receives acknowledgement. Listening is standing in the sound and allowing the awareness of a greater totality of chords to be heard. A resonance is evoked and an inner attunement is experienced. When this happens there is wonderment! Yes, this is one form of love. Sound has merged with a sounding.

“Still Listening” is perfected in the art of meditation. The ritual saying of mantrams is the one obvious point of significance where energy is created and directed. Within the framework of meditation, often implied in the title of the meditation, is the invocative question. Listening to the evoked response becomes the aim or purpose behind the meditation. Specifically, the descent of energies, from that point of assemblage into the process of distribution, involves this still listening. As our dissonances diminish the assonances resound.

Brahma Nada is the name for inner sounding. It is mentioned rarely but not much is conveyed in the written form. Within the heading of Kriya Yoga, or yoga of technique, there are several subtly different forms of yoga that teach meditation upon sound as a path to spiritual growth and awareness. The three principal forms of this variety of yoga are Nada, Laya, and Surat Shabda yoga.



In Nada Yoga, we learn that the source of the sound may be external or internal. The sound may be "gross" or "subtle." That is, it may be "struck" out loud (Sanskrit: "ahat"), as from a voice or musical instrument; or "unstruck" and outwardly silent (Sanskrit: "anahat"), arising

inwardly as from the subtle currents of energy or prana moving throughout the body.

The Sound of God and Inner Sound Meditation (Surat Shabd Yoga) suggests following the inner sound towards its source; again the books do not provide many details.

While engaged in these practices low frequency sound may be experienced as currents of pressure or motion. Encapsulation is the felt band or hemisphere of overall pressure experienced at the crown or upper head area. Chakras may be activated by these currents, producing an intensity of soft tension, a holding or a sensation of motion.

My research produced one treasure. As one enters towards the core of a realm of sound, there is a point of upliftment or entrance into the next realm. There is also the suggestion that behind all music or vocal sounding there resides that inner sound. External sound is the "carrier", struck-sound carries the unstruck-sound, similar to the octaves inherent in the note.

I want to know what is really happening as these etheric mechanisms (e.g. etheric ear) begin some activation. This activation involves external sound and inner sound which in turn may result in conceptual awareness by inducing insights or may stimulate imagery.

To summarise: sound is a part of speech and normal communication and careful listening is involved. Sound, as latent potential, is sounding continuously and we develop the inner hearing that, when activated, results in an inner unfoldment of imagery or understanding. This potential sounding is also inherent in the written word as an energy enfoldment. Meditative or reflective reading triggers a means of accessing this enfolded sound and a deeper apprehension of the writing takes place.

Please be aware that in writing I formulate a potential of attainment. Occasionally that attainment is achieved; it is not yet my constant state. My writing is an attempt to articulate some experiences and share them, hopefully shedding some light on these matters.

LEARNING FROM NATURE

by Katherine O'Brien

I recently read a book called 'What We Learned In The Rainforest'. It was written by a couple of successful businessmen, Tachi Kiuchi, head of Mitsubishi Electric America and Bill Shireman, CEO of the Future 500, who recognise that nature is intelligent and the principles that underpin nature can teach us about how to have a sustainable economy and how to run sustainable businesses. They see humanity as being part of nature, and therefore business and the economy as part of nature. They have set up the Future 500, who mediate between corporations and NGOs and environmental groups to enhance the triple bottom line.



The basic system that business operates with is economics. The basic system that nature operates under is ecology. Both come from the same Greek word oikos – meaning home. Economics is about the management of a home – a business, a country. Ecology is about the underlying logic or principles. Ecology looks at the interrelationships of all living things in a system and all elements within its environment – the big picture. The two are related. Economics is like studying business management, ecology is like studying business theory.

So they literally went and studied the rainforest to learn from nature's model. There were several key themes that emerged in the process. One of which is the importance of information.

They see the current economic system as almost at its limit of functionality and that we're at a point of transition into a new emerging system. The current economic system was sparked by the industrial revolution which replaced physical labour with

machines, making production less costly and more efficient. Natural resources are utilised, either from the earth like metals, oil, fossil fuels, or through labour, people. They are put through a process using machines to create products and waste. Those products are either consumed or thrown away when the products are no longer useful - more waste.

This system is facing a variety of limits. The system is in recession. Natural resources are being depleted; rainforests, fish, fossil fuels. Oil is a dominant resource, it powers our cars, it runs machines, it is the basis of plastics. It is a finite resource. There are some people who say we have passed the peak of oil production, the official version is it will be in 2020. With the dramatic rise in population and energy consumption over the last few decades, oil will likely run out at some time in the future. There are also the effects of pollution and climate change. The increasing social problems we have suggest the people are not healthy either.

If ecology is about the interrelationships of all living things in a system, then an economic system ideally would take into account all living things - that is people and the environment. One of the key themes of the new system emerging is sustainability. In order to be sustainable, businesses and the economy need to recognise the triple bottom line; the economy, the environment and people. These three are naturally interdependent. If one is overemphasised, as is currently with the economy, the whole system is compromised and will not be sustainable.



The key in the new economic system is to replace physical resources with information, to have a system predominantly based on information rather than consumption. In the rainforest the system adapted to the information gained from limitation and allowed to decay what didn't work and promoted what was needed. It was the inherent intelligence or the efficiency of a particular species, or a particular function that supported the environment. This created a diverse, abundant environment for the whole system. This is done unconsciously and naturally in nature, but could be replicated consciously in an economic system.



They talked about the Japanese concepts of omote and ura. Omote is the outer, tangible component of something, and ura is the underlying energy, pattern, intelligence, design of something. They also went and studied the Balinese people and found the same concepts, sekala and niskala, sekala being the outer, physical component and niskala being the underlying energy, intelligence, design. It can be compared to the Chinese yin/yang, subjective and objective. Most cultures have these dual concepts in their world view. The most valuable component is the underlying design, the intelligence, the information, the pattern.

Computers are made from metal and plastic. What makes them unique, valuable and functional is the design of a computer, of a microchip, the information that lies behind them. This is where the profit and value comes from.

Sugt yespl fsga tdD oebn
All profit is created by design

With all the diversity we have in the world with different animal species, plant life, people,

nations, cultures, they're all made of the same physical components; cells, molecules, atoms, water; but it's the design, the structure, information, the intelligent consciousness that creates value. The new economy would emphasize this information, this intelligence to create greater value and profit for the whole system. Different information would be combined to create synergies of new designs and patterns that would have greater benefit to the whole and would naturally operate in a sustainable way.

We can see a hint of the new system in the effects of the internet. Any kind of information is available to anyone now with the click of a button. We have a means of communicating information easily and have rapidly moved forward as a result. The new system would have a broader perspective that recognises what climate change and globalisation is pointing to, that the system has to incorporate value in terms of the environment and people, not just financial value. This is the triple bottom line, that sustainability is only accomplished if these three are interdependently linked and valued equally. This then creates prosperity and abundance throughout the whole system.

If we can combine the intelligence of nature, which we are a part of, and human intelligence and creativity the possibilities are endless. If we include the environment and people as an integral part in a healthy economy, the possibilities are endless. By enhancing the triple bottom line we will be more prosperous, more healthy, and will be able to sustain ourselves into the future.



2010 MEDITATION RETREATS

These retreats are at the high point of the spiritual year.

At each retreat there will be meditations and a series of themes for contemplation accompanied by talks.

Come and enjoy the beauty and serenity of the temple and the refurbished Long Bay House



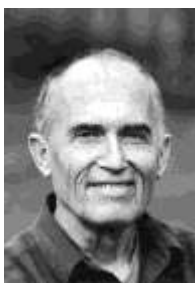
FESTIVAL OF SIRIUS

Ω 24 – 25 July 2010 Ω

- Themes – karma, initiation, freedom
- What is Freedom?
- What is the nature of Responsibility?
- The note of joy
- Points of crisis
- Furthering self development

Facilitated by Lawson Bracewell

Lawson has a unique combination of heart, humour and wisdom. He has been an active meditator for 35 years. He teaches courses through Christ College in New Zealand which include the Ancient Wisdom Teachings, psychology, astrology and meditation. He has a PhDE in Esoteric Psychology, a Masters in Social Work and is a professional astrologer of over 35 years.



**suggested donation \$200
+ food to share
+ accommodation \$20 per night**

**If you are drawn to attend any of these retreats
please contact:**

**Lawson: 03-355-1395
lawsonb@ihug.co.nz**

FIERY OPPORTUNITIES

by Lawson Bracewell

Approximately every 84 years, Uranus begins a new cycle by entering the sign of Aries. Shortly after this event occurs, Jupiter and Uranus conjunct each other. This occurred in 1927 and has just occurred. This article will explore the probable opportunities opening out before us.

Uranus represents energies which are outside what we consider to be reality or that which is logical or that which is known. The energies of Uranus shock, initiate, innovate and shatter. Each Uranian event seems to appear out of time. Its impacts are synonymous with rebellion, individuality (a break from collective reality) and crisis/opportunity.

The current cycle of Uranus began on 31 March 1927 at 5:25PM GMT. (It will end 12 March 2011). The chart erected in London for this event reveals several things about what was initiated:

1. Uranus is in the 7th house; therefore, the innovations concern our relationships with ourselves and others. The idea being introduced is that relationships can and should be built on spiritual understandings rather than personality need. It heralds the emergence of the concept of Right Human Relationship which will become the keynote of the Aquarian Age.
2. There is a waxing square from Uranus to Pluto in the 10th house of destiny. The idea introduced is that we can struggle to become conduits for power if we establish this concept of right relationships.
3. There is a waxing trine to Saturn in the 3rd house of communication. The idea introduced is that we can create new forms of communication that will substantiate the new understanding of relationship.



In the last 83 years, we have seen a revolution in relations. Countries have emerged as independent, found innovative ways to cooperate with each other and also have failed and tried again. Divorce rates have soared, unconventional relationships have become accepted and the rules governing marriage and partnership have been radically altered. And, there has been an increase in awareness that we each have a delicate and changing relationship with our soul and personality.

Perhaps the best example of the struggle to be a conduit for power rather than be disempowered by national leaders is the history of Stalin and the Russian people. The people identified with the new concept of independent relationships and were at odds with Stalin and his fascist version of communism. A more recent example was those Americans who contributed to Obama's campaign for President in order to shift power from the power elite to the people.



The communication opportunities have certainly flourished. Our technology has brought sound and images via TV, telephone innovations, and the World Wide Web. We have removed the barriers of time and space to see and hear each other and exchange ideas and information. This seems a precursor to telepathy.

The event chart for the Jupiter/Uranus conjunction of 1927 occurred at 9:37PM on 15 July and is set in London. The conjunction occurred in the 2nd house of values and resources. The new trend for social, cultural and psychological transformation is therefore focused in this area.

The belief that emerged in that year was that we do not have to be limited by old values and systems that control money and resources. As an example: just before the Wall Street stock market collapse, Americans believed that the market would expand indefinitely. The Russian land-owning peasants believed that they were on the brink of wealth just before Stalin crushed them under state control.

In this period, where we see a great expansion of Capitalism, we also see that it contains a flaw that will destroy it: growth can be unlimited and we do not have to look at the effects upon the greater whole. Will it be replaced by a system of sharing? This chart has a grand-trine involving Jupiter, Mercury, Saturn and Uranus. With Mercury in the house of health, we saw the discovery of penicillin. This innovation created tremendous wealth, created the field of antibiotics and improved health outcomes.



Uranus rules Aries at the highest level. In Aries it is most purely expressed: the conduit for ideas which are archetypal or seed ideas. It emphasises that all cycles begin with Aries and all cycles have their source in powerful seed ideas.

The event chart for the new cycle of Uranus is set for 28 May 2010 at 3:49AM in London. In this chart, Uranus is in the 12 house of all things hidden. We could speculate that there will be innovations caused by the revelation of secrets. There may be advances in psychology which allow an emergence of the sub-conscious. We may see the Reappearance of the Christ in the next 84 years.

There is a waxing square to Pluto in the 9th house of spiritual, philosophical and legal systems and a waxing opposition to Saturn in the 6th house of work and health. The waxing square to Pluto was present in the 1927 chart, so there continues to be stress-creating opportunities for new ideas to be

used for individual and collective empowerment. In this new cycle, the struggle will be between the emergence of an inner reality and the entrenched power-holders in the educational, spiritual and legal systems.

The opposition to Saturn has been in effect since November of 2008. This has created the dramatic events that highlight the need for the old system to change. In this event chart the challenge is to change our definition of service to being the spontaneous response of the soul. We must discipline our three-fold personality so that we make whole the form we inhabit. Then, the Christ energy will be able to move through us and lead us into right livelihood. We will need to affirm that everyone has a right to creative and fulfilling work.

The event chart for the Jupiter/Uranus conjunction is set for 8 June 2010 at 11:12AM in London. The conjunction is in the 8th house of other peoples values. Innovation may occur that will allow us to psychologically know each other at deeper more compassionate levels. We might see each others values objectively and therefore enter into a free sharing of resources. On another level, we might come to see death as a joyous entry into life more abundant.

The waxing opposition to Saturn in the second house of values and possessions suggests that in order to have or rightly use the opportunity that this Jupiter/Uranus conjunction offers, we will have to re-evaluate our own values and increase our awareness of the difference between needs and desires. In the short term, this probably means the poor will get poorer and the wealthy will recognize no limits to their wealth. In the long-term, we may come to value everyone having their needs met.

The square to Pluto in the house of individual creative self expression means that children will suffer in the short-term and may be supported and empowered in the long term. The individual will initially feel disempowered in their ability to express their Will to Be, but, in the long-term there is the potential for a renaissance of creative expression.

And, so we have embarked on a new 84 year cycle and at the same time are finishing the last one. It heightens the sense of this being a time of great transition. We must experience the reality that Truth Will win out.

SOLAR FIRE MEDITATIONS

Venue – 118 Bealey Avenue – 7.30 pm

Talks from each month are available on the website

www.christcollege.co.nz/meditation.html#solarfire

26 JUNE 2010

Cancer ♋ **Keynote: I build a lighted house
and therein dwell**

(actual time 26 June 11.31 pm +eclipse)

25 JULY 2010

Leo ♌ **Keynote: I am that and that I am**

(actual time 26 July 1.38 pm)

24 AUGUST 2010

Virgo ♍ **Keynote: I am the mother and the
child, I God, I matter am**

(actual time 25 August 5.06 am)

NEW MOON DATES AND TIMES

Venue – 118 Bealey Avenue – 7.30 pm

11 JULY 2010

Cancer ♋ **Keynote: I build a lighted house
and therein dwell**

(actual time 12 July 7.42 am +eclipse)

9 AUGUST 2010

Leo ♌ **Keynote: I am that and that I am**

(actual time 10 August 3.09 pm)

8 SEPTEMBER

Virgo ♍ **Keynote: I am the mother and the
child, I God, I matter am**

(actual time 8 September 10.31 pm)

Meditation Temple

Meditations are held on the temple site at the
time of the full moon.

Cancer	26 June	4.00 pm
Leo	26 July	12.30 pm
Virgo	24 August	4.00 pm

PH: 03 304-8893 FAX: 03 304-8896

E-MAIL: sevenrays@clear.net.nz

POETRY

THE COSMIC RAPPER

by Thomas Williams, M.D.

The One becomes the Many in the world of Tao,
As Mind splits the Cosmos into I and Thou.
Every thing's a whole and every thing a part.
Paradox was present at creation's start.

Meditation, contemplation lead to the unknown.
Buddhists seek enlightenment using this Zen
koan.

What is the sound of one-handed clapper
And what is the face of the Cosmic Rapper?

What's being played in the field of the Lord?
Do we need to die to keep from getting bored?
Why is there death, why not just youth?
Is life just illusion, what's the real truth?

Light can be a particle; light can be a wave,
Light creates appearance like in Plato's cave.
This paradox of light shaped the world of Bohr;
Complimentarity, his philosophic core.

Superstrings vibrations sound the Cosmic Word
Creating a new universe, amazing and absurd.
So the Cosmic Rapper, with heavenly exchange,
Brings order out of chaos in a sea of change.

When the music of the spheres moves the heart of
Man
To dance, to laugh, to love again anything he
can,
Then Man acts in harmony with the mind of God.
He brings to earth new energy, like a lightning
rod.

The Cosmic Rapper everywhere sings a song of
grace,

And his favourite audience is the human race.
Humans with the heart of God are agents of His
Will.

Acting with the mind of God do his plans fulfil.

So wake-up to the music, listen from within.

The Cosmic drums are playing so dance and fit
right in.

No more separation, with all life we are kin.

Consciously we'll make our lives a path back to
Eden.

CAST YOUR PEARLS....

Even on sea-bed, Sun and Moon unite
 In growing spheres of radiance, orbs of light,
 Hid in tides, borne on waved e-motion,
 Wrought of lustrous matter, for man's delight,
 A product of life within the ocean.

Men dive and delve to wrest this buried
 treasure,
 Risk life- breath for pearl of value beyond
 measure;
 The fleshy folds yield up their sacrifice
 To sate desire of human eyes
 With harvest for aesthetic pleasure.

Inner lining of shell, exposed to light,
 Gives of its radiance – moon platter
 In fullness of its monthly rite-
 Reflects the Sun on silver screen
 In tug of tide, reveals in Full Moon's beam
 Crescent indent of seed pearl scatter.

Wisdom of soli-lunar union born
 Month by month, as pearl in oyster spawned;
 Through friction and through irritation
 There grows the salve of human civilisation
 Light of consciousness in aura worn.

As inner screen now opens to Higher Sun
 Scattered pearls of wisdom become the One,
 Dream-catcher offers to the minds of brothers
 An inner harvest o'er many life times won.

Lift high the shell for new impression,
 As host by priest for heavenly blessing,
 As film on which new image will appear,
 On tabula rasa altar of the mind,
 Seeded light of hierarchical idea,
 Vision emerging, renewing humankind.

**ASHRAM**

An ashram is not a place to go,
 But a state of being when I am in the flow.
 There comes a state of seeing
 Shared by all who gravitate
 To this state of envisioning, to this altered
 state.

There telepathic links are formed.
 Seeding together, a new idea is born.
 Ripples from a central core are formed.
 Each will take the seed and bring to flower
 A new solution for humanity's need of the
 hour;

Bathed thus, and in continuous flow,
 We carry ashram wherever we go-
 In joyous combustion at the meeting of
 brothers,
 In illumined rapport, one with the other.
 May this be so!

TO THE TEMPLE

Wind-driven valley
 Pushed in cloudy shifts
 Then drapes hung low
 In a still drift
 Awaiting lift,
 Impatient for clear light down below.

Pinpricks of ice
 Make the face glow
 In the wind where devas dance
 And man is loath to go.
 Then comes the snow.

When white-out blots
 And icicles clot
 Ringed candles, early on a winter's morn.
 In womb of light will keep us warm.
 Our sound-funnel of light,
 A tunnel for invocation to be born,
 Reaches to summon a higher counterpart
 To shock, awaken, humanity's slumbering
 heart.

All by Julia Tarnawsky

EXPLORING CHRIST COLLEGE AT THE HEAD OF TAKAMATUA CREEK

by Julia Tarnawsky

We approach the ford. Its quiet pools were strewn with yellow flower in summer. Now a fantail wags his greeting. It is winter and yesterday's sleet lies hard against the mountain shadow.

Pink papery limbs, bereft of fuchsia flowers, knot and weave decoratively across the stream. Below the sound of crashing water released suddenly from deep cut channel to tumble over rocky outcrops, in quick descent, fall by fall. Hidden under cathedral arches of trees it tunnels, kept company by a choir of birdcalls.

We cut a swathe among the chest high ferns last summer, along the creek side. We stumbled over boulders, hacked through blackberries and came across a pristine pool, a gazing mirror to the sky. Reverentially, kneeling, we cupped hands and drank, and marvelled at the flow of tiny waterfall into the deep welling silent space, untouched.

Onward, up, we crossed an ancient fence and sank into an overgrown rivulet, emerging with souvenir of muddy ankles. On, up through Douglas firs clumped, dark, desiccated, onto sunny remnants of a farmer's track, then up, struggling to steer clear of gross grey gorse. Till lo! A stand of natives, colony, family; totaras for hugging, fuchsias bent and burlled, nursery saplings between. Place for a picnic, for contemplation and retreat, in awe of the sacred precinct-home we had invaded.



A NEW CYCLE BEGINS

by Lawson Bracewell

The year begins with the three major festival of the year: Aries, Taurus and Gemini. Then on 21 June we celebrate, in the Southern Hemisphere, the Winter Solstice. We then celebrate the nine minor festivals that occur in the signs Cancer through Pisces.

Here are the themes of the next three spiritual festivals:

CANCER This month is from 21 June to 23 July. The Festival of Cancer is 26 June at 11:30PM (NZ time).

Mantra: I BUILD A LIGHTED HOUSE AND THEREIN DWELL. (This should be said and meditated upon repeatedly during the month).

Work to be done: We work to shift the energy from the domination by the moon to the control of Neptune. We focus on our emotional life and attempt to heal all that draws us into the sentimental emotional responses of the past. We see the emotional body filled with love. We imagine that through an increased access to compassion we align with the Great Mother and reach out to Humanity as if they are our brothers and sisters.

LEO This month is from 23 July to 23 August. The Festival of Leo is 26 July at 1:36PM (NZ time).

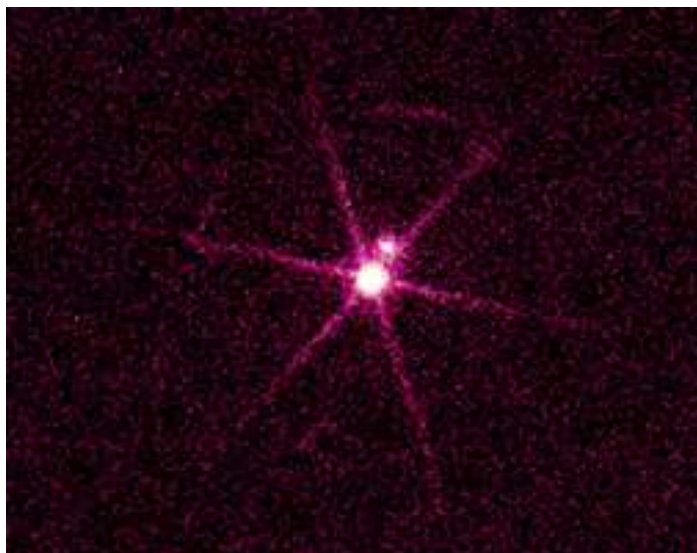
Mantra: I AM THAT, AND THAT I AM. (This should be said and meditated upon repeatedly during the month).

Work to be done: We seek to identify the Self as the soul and not the ego self of the personality. We strengthen the Will to be that Self. We consecrate our individuality to inspire others to release their creativity. With our hearts ablaze we courageously unfold our creative gifts for the enrichment of Humanity.

VIRGO This month is from 23 August to 23 September. The Festival of Virgo is 25 August at 5:04AM (NZ time).

Mantra: I AM THE MOTHER AND THE CHILD, I GOD, I MATTER AM. (This should be said and meditated upon repeatedly during the month).

Work to be done: Bring the focus of attention from the imperfections of the outer world to the perfection of the inner worlds. Devote yourself to perfection within a field of acceptance. Look deeply into all people and all situations and see the soul steadily working to heal and make whole. Focus upon exclusivity and reach out to bring individuals and groups together in shared service activities.



Sirius

CURRENT EVENTS

1. We have put a proposal to the Canterbury Students' Association president to teach an eight week course in meditation.
2. Our Residential Programme of Occult Meditation at Christ College opens its second year on 21 June. The necessary five students for a year 1 programme did not apply. We are, therefore, running the full curriculum for the second year with Julia, Orest and I acting as both the tutors and the students. Our decision last year to run the course in this manner was productive and successful, so we are looking forward to working on curriculum development in the coming year.
3. Julia and Orest are happily settled into our first faculty house. They are enjoying glorious views and warm and spacious living areas. They have done a lot of planting of natives and creating spaces with rocks around the house.
4. The 1880 cottage got a face lift both inside and out. It has a new front door and entryway with a stained glass window. The back entryway now has the same external cladding as the house. Inside, the library has been re-organized and expanded. And, Lawson now sleeps in the room that will become the office. (He awaits the completion of the second faculty house).
5. We have had three well-attended and successful meditation retreats. The next one is the Leo retreat on the last week-end in July. We are assessing whether to offer other week-end retreats in the year.
6. Orest, Julia and Lawson have made a number of contacts in the Christchurch and Akaroa communities in order to integrate Christ College into the larger community. In Akaroa, this has meant attending dinners and social functions. Lawson has become involved in a Guaranteed Income group and Julia is becoming involved with the psycho-drama group in Christchurch.
7. The five member Board of Christ College has established a three-monthly rhythm of meetings. The Board is currently working on a comprehensive site plan, so that future development can occur within a set of common agreements that honour the land.
8. We have launched a fund-raising programme that invites our supporters to buy a piggy bank and designate it for Christ College. They are free to deposit in it when prompted and then, at intervals, send a cheque to Christ College. So far, over 30 people have joined. Would you like to?
9. Our Saturday Esoteric Psychology group is open to new members. We meet every other week in Christchurch and discuss the book, Esoteric Psychology - Volume I.
10. We are inviting members of the Akaroa community to a series of discussions on soul centred psychology at Christ College.



LAND FOR SALE

**25 ACRES AT 600 METRES ABOVE AKAROA ON THE
BANKS PENINSULA**

\$97,000

**STUNNING VIEWS. STEEP GORSE COVERED LAND AND
REGENERATING BUSH. SOME DOUGLAS AND MACRACARPA
TREES PLANTED**

A PLATFORM SUITABLE FOR A SMALL HOUSE

CHRIST COLLEGE AS YOUR IDEAL NEIGHBOUR

**MORE PICTURES ON WWW.CRTREALESTATE.CO.NZ
LISTED AS TU7678**



View from land

CHRIST COLLEGE STUDY OPTIONS ALL WELCOME

ESOTERIC PSYCHOLOGY STUDY GROUP

This group studies one of the Alice Bailey books Esoteric Psychology I, which in summary looks at the laws of the soul, the seven rays, and the psychology of the soul. It is a class for beginners and is open to new members – all welcome.

The group meets fortnightly on Saturdays at 11 am
at 30 Rutland St

For further information please contact Lawson:
Ph: 355 1395. **See also** www.christcollege.co.nz

Another group continues to meet fortnightly on fortnightly Saturday mornings to study the depth of Cosmic Fire.

LAWSON BRACEWELL - ASTROLOGER

Lawson is available for soul-centred astrology in Christchurch either in person or for taped readings. He has a natural ability to see to the heart of an individual and his focus is on revealing the soul's potential for the client and pointing out ways of allowing that to be expressed by the client.

For readings please contact him on:
(03) 355 1395 or email lawsonb@ihug.co.nz

Updates and Information

Christ College of Trans-Himalayan Wisdom

LONG BAY HOUSE – HIRE



Long Bay House has been recently refurbished and is available for hire. It is the perfect place for workshops, meetings, or a weekend getaway. It is nestled on the hills of the Banks Peninsula with stunning views. It comes complete with kitchen facilities, shower and toilet facilities and can accommodate up to 24 people and sleep up to 10.

Facilities available:

- * temple access
- * 2 workshop/teaching rooms
- * marae-style accommodation
- * kitchen
- * shower/toilet
- * picnic table, nature walks

Please contact Lawson for details:
lawsonb@ihug.co.nz

HEALTH PRODUCTS

Christ College is a distributor for health products from Life Force International. This issue's special is Taheebo. It is \$55 plus postage.

Taheebo is a support for the body's natural immune system. It is an extract from a South American plant known as the Trumpet Bush. Get some and be prepared for this winter's colds and flus.

Contact Lawson: 03-355-1395

FRIENDS OF CHRIST COLLEGE

We invite you to become a Friend of Christ College by contributing a monthly donation. By doing this you be a part of a global initiative to manifest the esoteric schools. You will receive regular updates, the newsletter, invitations to workshops and events. Your support will enable us to progress the project in a practical way. Please contact Lawson for further information: sevenrays@clear.net.nz or 355-1395



RED RASCAL POTATOES

Support Christ College and purchase some fine Geraldine organic potatoes.

\$6 for a 5 kg bag.

Kindly donated by Ian Blakemore

Please contact Lawson 355-1395 or lawsonb@ihug.co.nz to order



PIGGY BANK PROGRAMME



We are in the midst of fund-raising to pay for the building programme at Christ College. All is going well and I am always looking for new ways to engage a larger field of Friends of Christ College.

I suspect that you do not see your current financial situation as supporting large humanitarian projects. So, I will not appeal to you to send thousands of dollars.

What I have in mind is: would you be willing to buy a piggy bank and designate it as the Christ College piggy bank? Then, whenever you felt the urge, you could put change into it. Every month or two you could empty it and write a cheque to Christ College for that amount.

Current trends in fund-raising indicate that the greatest funding comes from large numbers of people giving very small amounts of money. Certainly, the Obama campaign found this to be true. Please let me know if you can support us in this way.

TRIANGLE CENTRE

(Established 1974)

Books available by mail order from the Triangle Centre include Alice Bailey, Agni Yoga, Torkom Saraydarian, Sundial House.

Contact

124 Wellington Rd, Paekakariki

PO Box 25, Paekakariki

Tel/fax: (04) 902 1667

information@trianglecentre.org.nz

www.trianglecentre.org.nz

Sender: *Christ College*
of Trans-Himalayan Wisdom
30 Rutland Street, St Albans
Christchurch
New Zealand

Last Words

Summer Solstice - 21 June 2010 - 11.30 pm

WEB SITE www.christcollege.co.nz

This site is regularly updated. You can download the Newsletter; keep up with events that happen between Newsletter printings and see some of the photos of current projects and events.

Please contact us if you have a relevant link.